

How to install an Expert Adviser (EA) to your VPS server

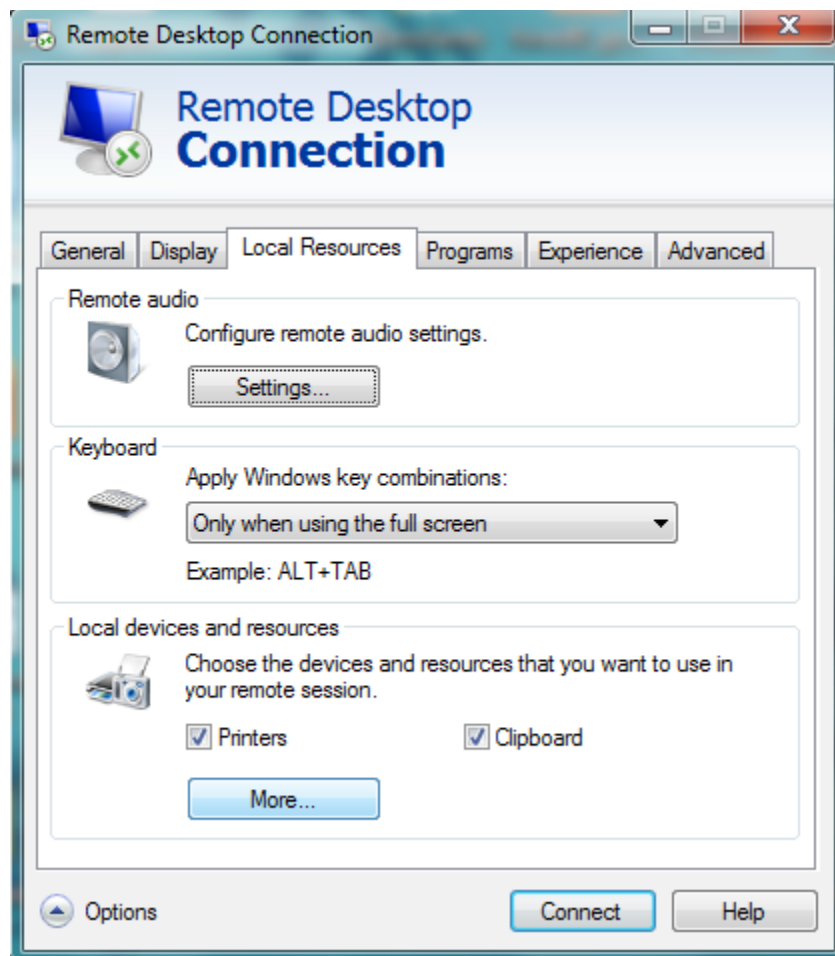
Step 1

Launch your VPS server. In the Remote Desktop Connection window click "Options".



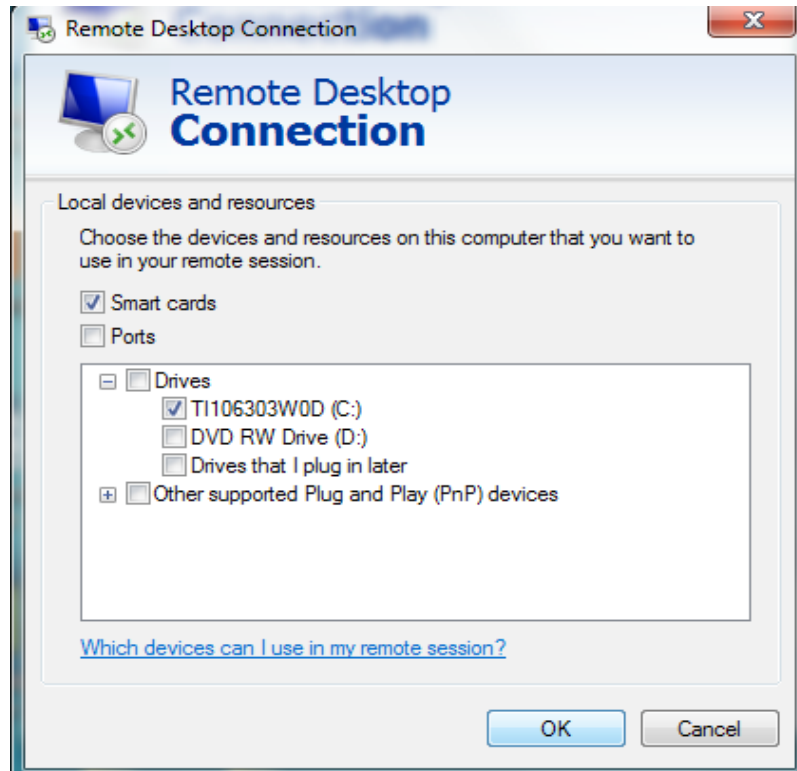
Step 2

Choose the folder "Local Resources", section "Local devices and resources" and click "More".



Step 3

Choose the local disk of your computer the VPS server is connected to. Click "OK".

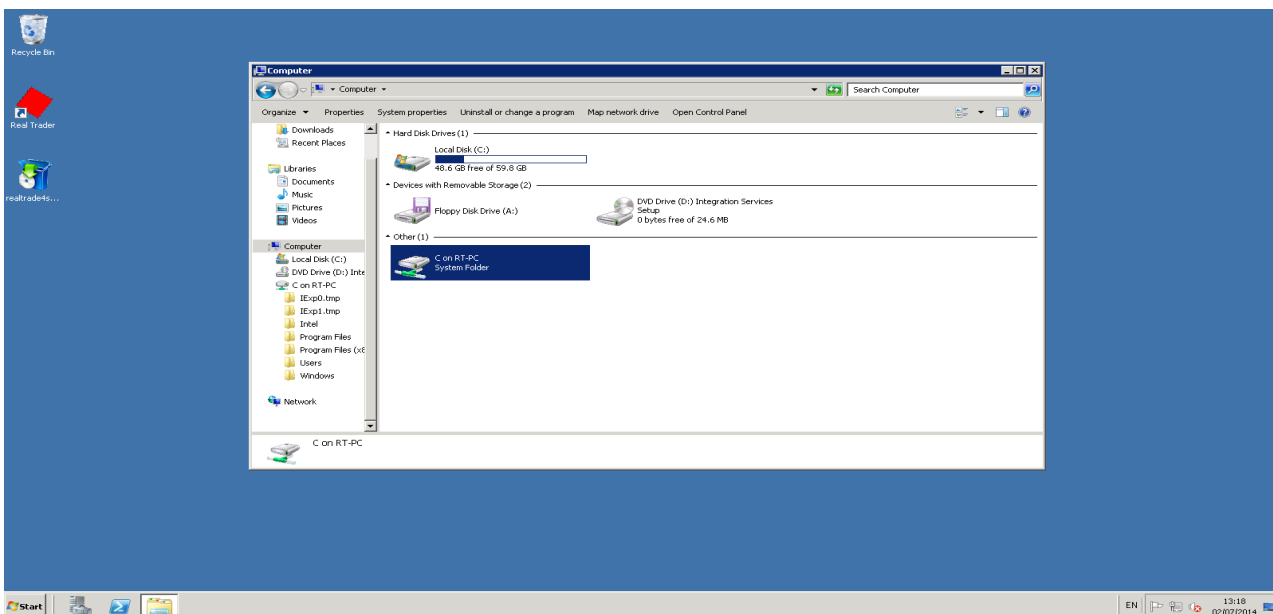


Step 4

Connect to your VPS server.

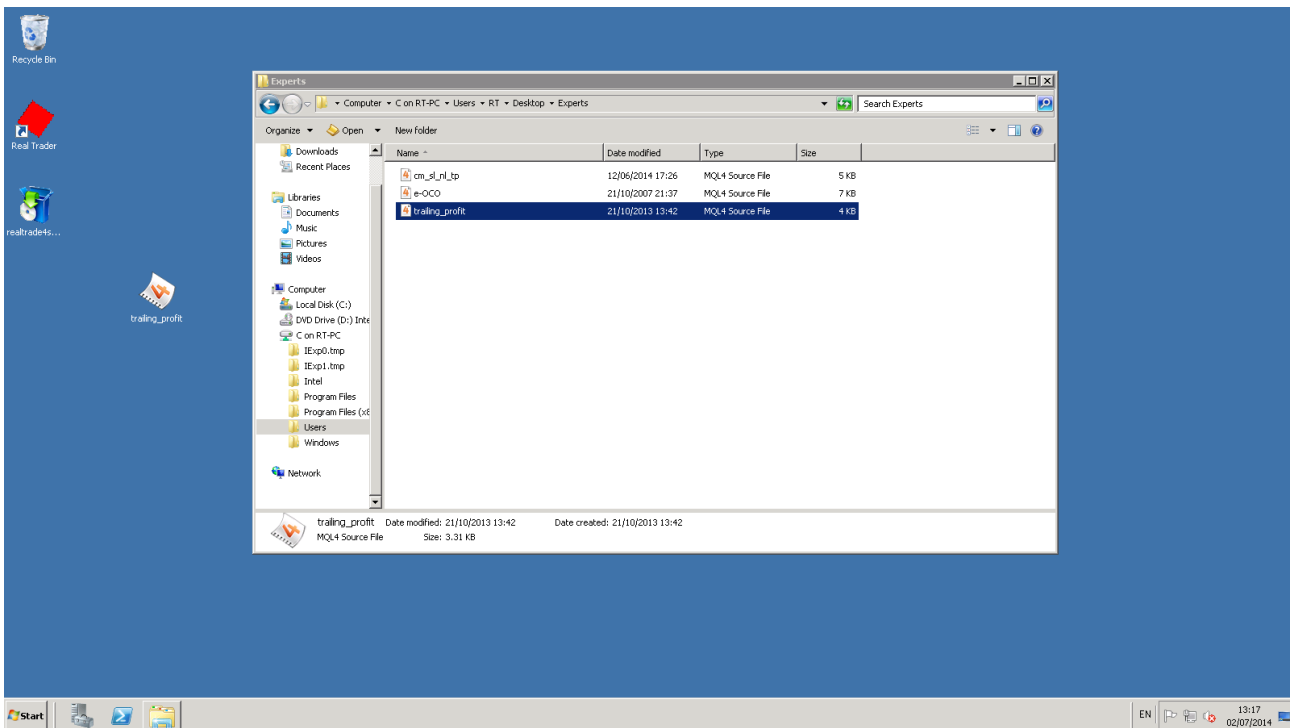
Step 5

In the VPS server window open the folder "Computer". Choose the disk that was attached earlier.



Step 6

Open the chosen disk. Find the appropriate EA file on the local disk (through the VPS window) and drag it on the desktop of your VPS. Now the file is located on your VPS server.



Step 7

In order to make EA work smoothly, drag the EA file from the desktop to the EA folder "Experts" of the terminal Real Trader 4, launch the terminal, connect to your trading account and launch an EA.

