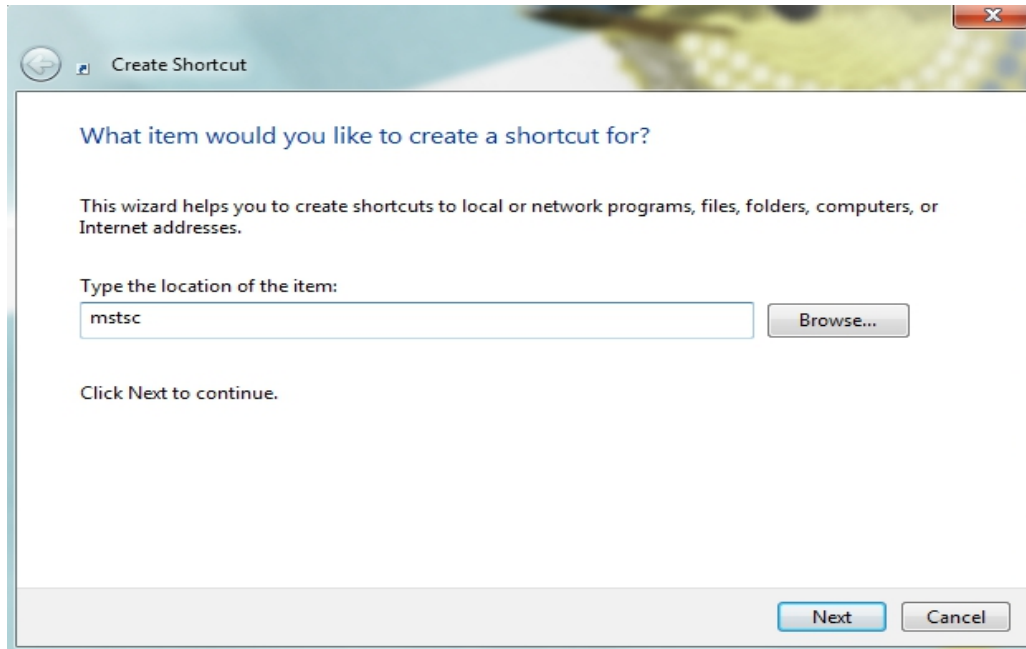


How to set up your VPS

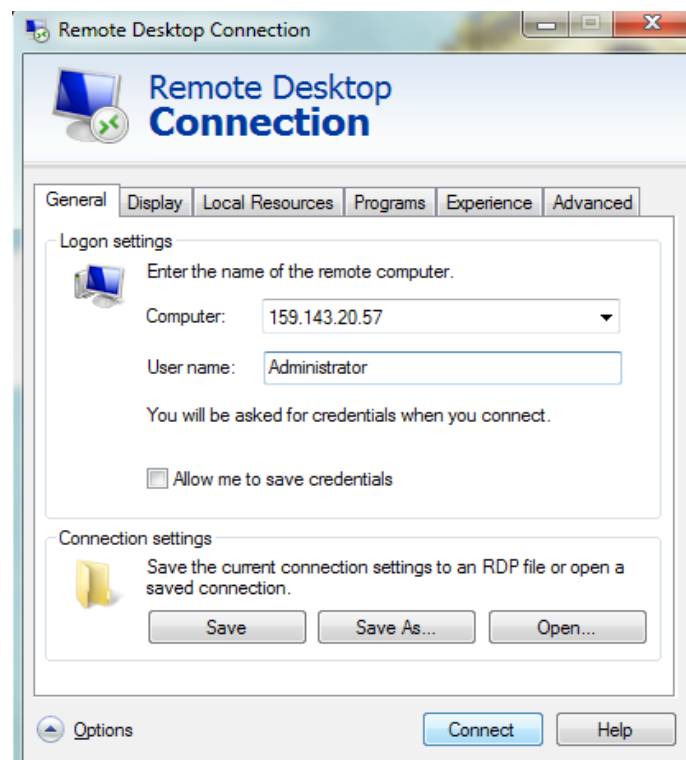
Step 1

Make a shortcut of your VPS on the desktop. Make a right-click on the desktop, choose "New", then click "Shortcut". Create Shortcut helper will appear. In the empty field write the name of the program "mstsc", i.e. Microsoft Terminal Service Client.



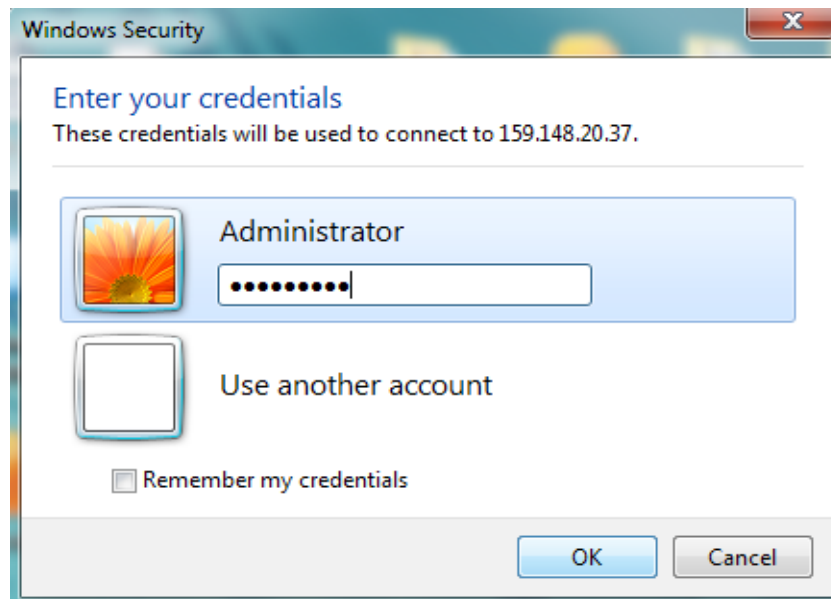
Step 2

The shortcut is created. Launch the program by making a double-click on it. Click "Options", in the General folder write the IP address of your VPS server and the username "Administrator". Click "Connect". A connection window to VPS will appear.



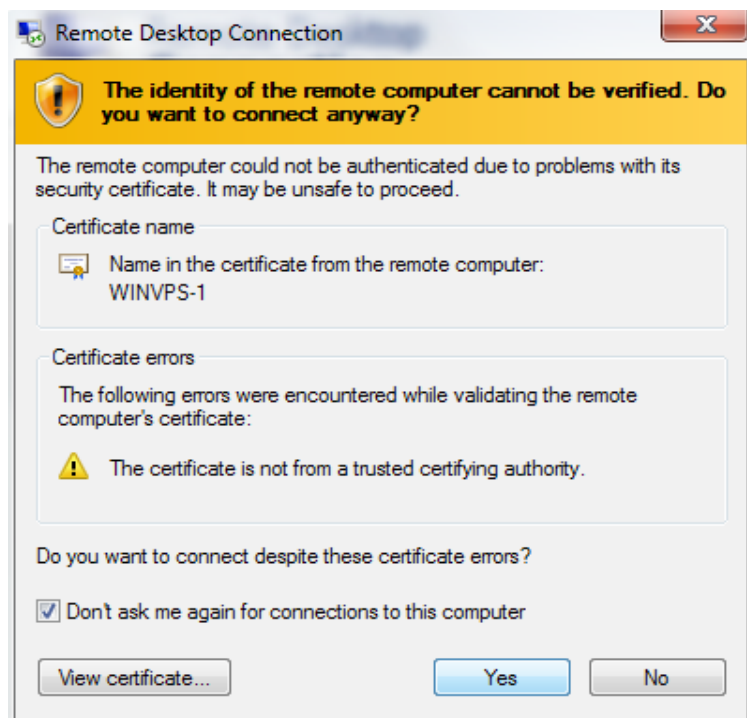
Step 3

Enter a password of your VPS server and click "OK".



Step 4

Windows can show an alert that the identification of the remote computer cannot be verified. Please, make a tick "Don't ask me again for connections to this computer" and click "Yes".



You successfully connected to your own VPS server!

Your VPS server will be displayed on the desktop of your computer. VPS server will be working 24/7 (until the end of the lease period) regardless your computer state.