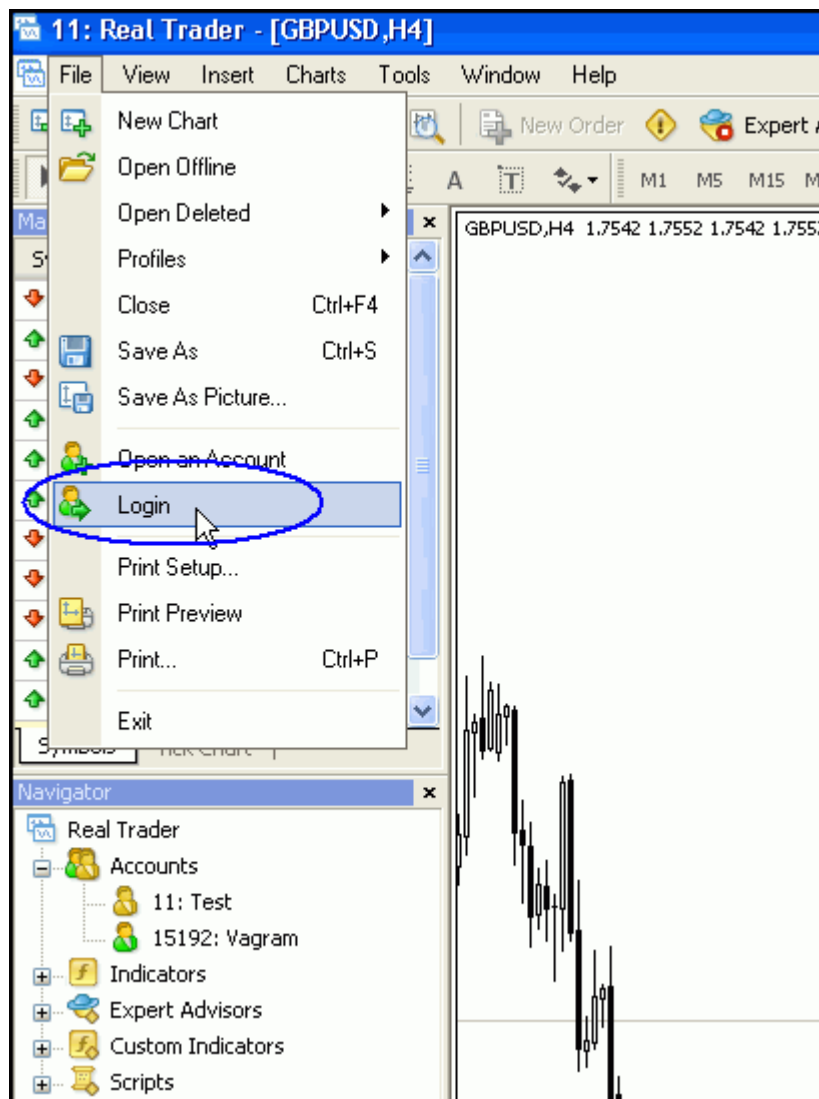
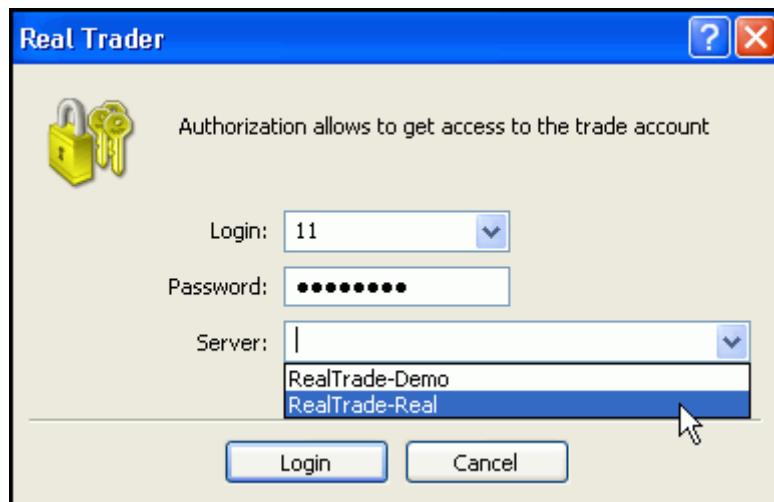


Connection Instruction for Real Account

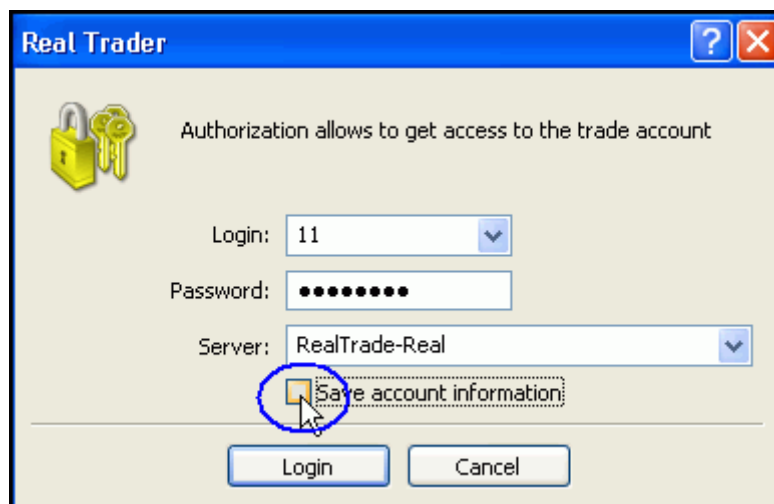
1. Download the trading platform **Real Trader 4** from the Company's website www.realtrader.org.
2. Run the setup file **rt4setup.exe**, installing the trading platform according to the instruction.
3. After successful installation, double-click the shortcut "Real Trader 4" on your desktop to launch the trading platform.
4. To login to your account click the "File" menu and select "Login".



5. Enter your Login and Password given by the Company and select the server name "RealTrade-Real" from the "Server" drop down list.

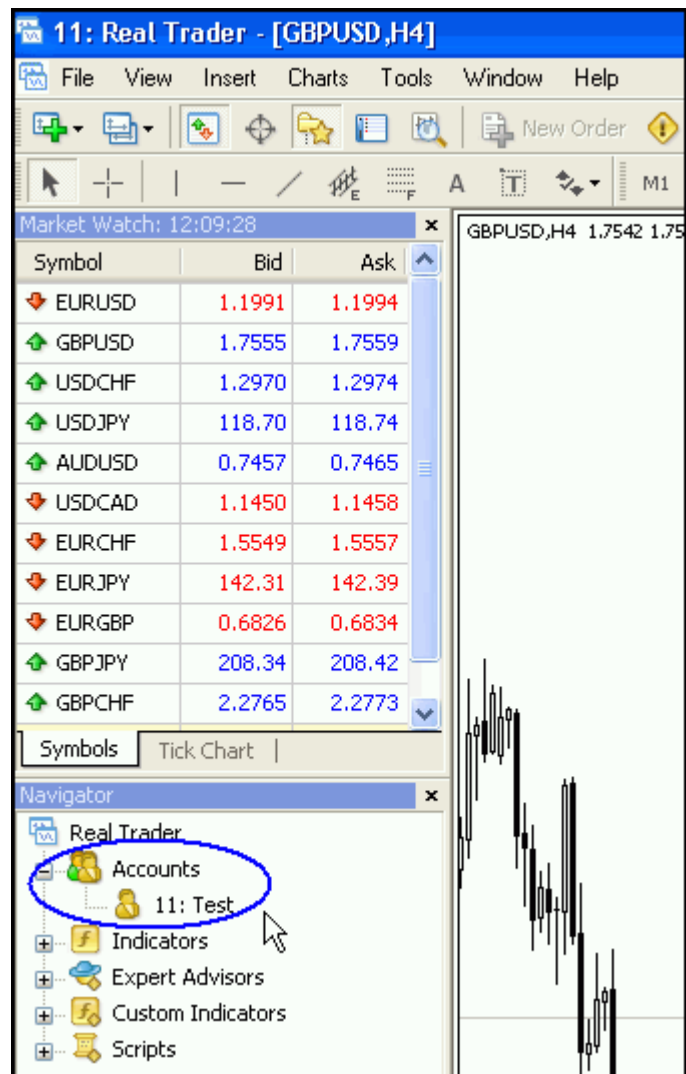


6. Remove the tick from option "Save account information" to keep your personal settings in safety.

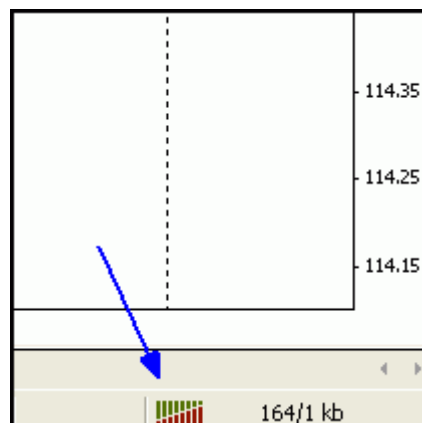


7. After all data have been specified, the "Login" button should be pressed.

8. After a successful authorization, you will see your account number with your name and surname in the "Navigator" window.



9. Connection indicator in the right bottom corner should be active.



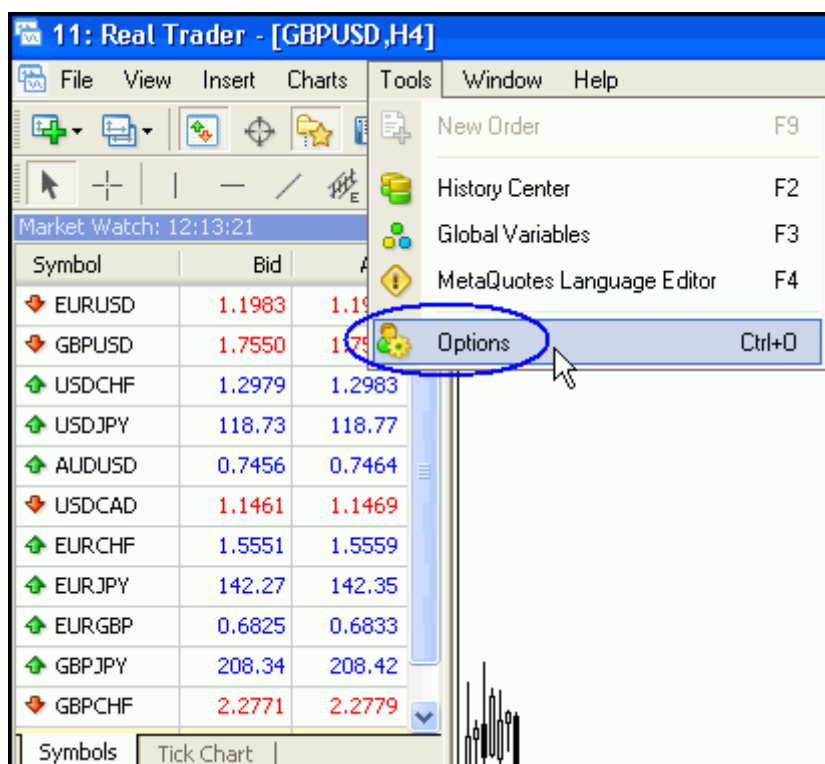
10. In case of unsuccessful authorization you will see "Invalid account" in the right bottom corner of the trading platform. Please try again and make sure that:

- 1) You enter the right Login and Password;
- 2) You type Login and Password with the Latin letters;
- 3) "Caps Lock" is switched off;
- 4) You select server "RealTrade-Real" in the authorization window;
- 5) Your Internet connection is established.

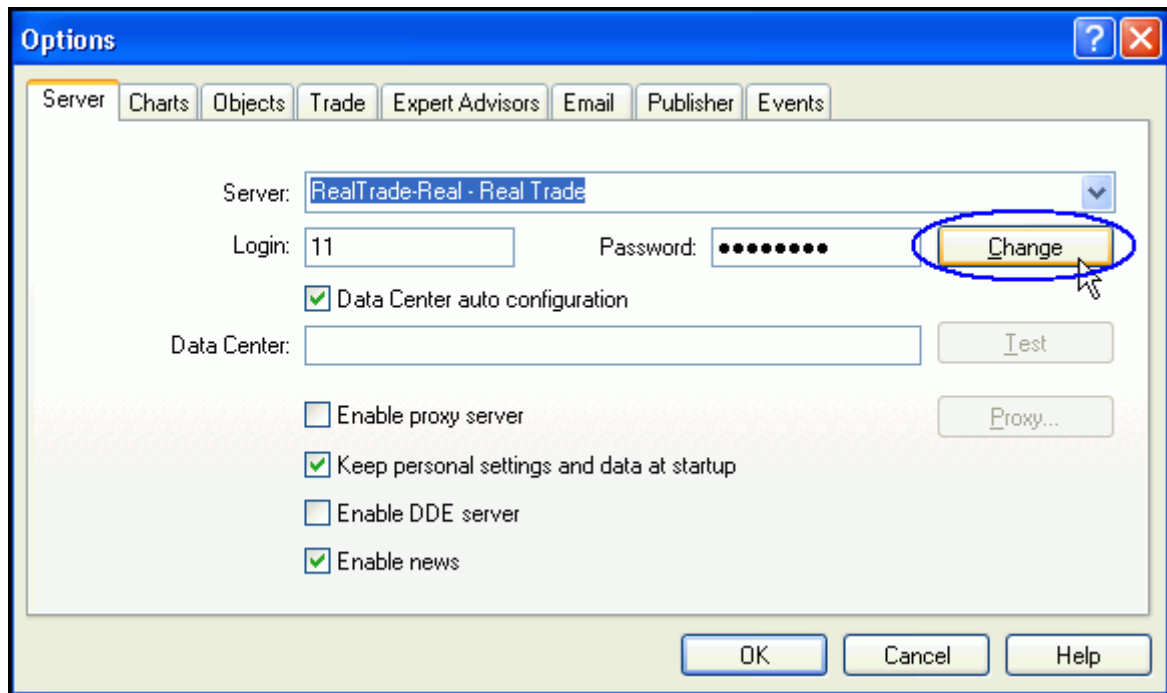
11. If you still experience problems, please contact us by phone numbers indicated in the "Contacts" section of the Company's website or via e-mail info@realtrader.org.

Password Change Instruction

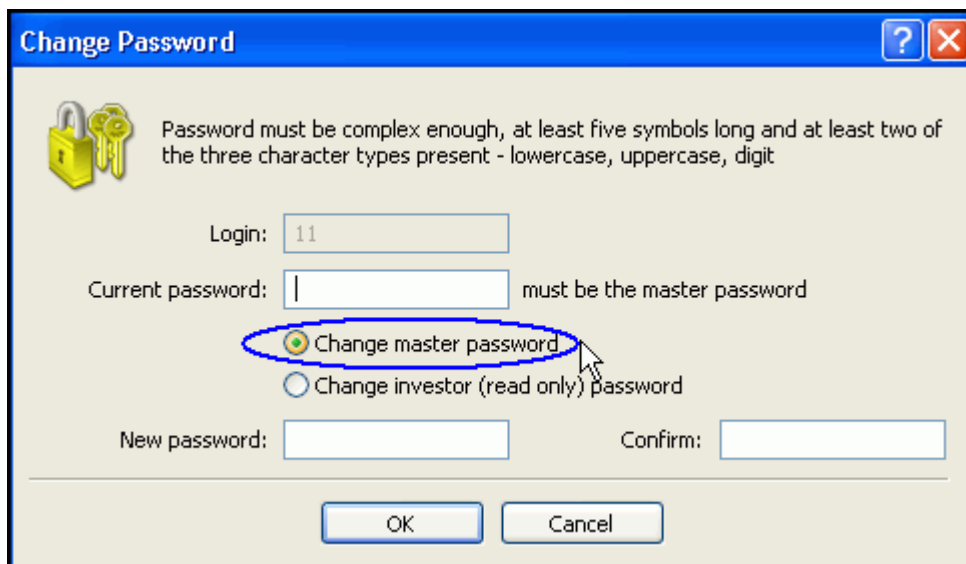
1. After the first successful authorization to the real account, you **have to change the Password**.
2. Click the "Service" menu and select "Options".



3. Click on the "Change" button in the appearing "Options" window.



4. Now you can change your master password. Type your current password; afterwards type your new password twice and click on the "OK" button.



5. For your safety, you must keep your password confidential and not disclose it to any other person.
6. In case of password loss, please contact us by phone numbers indicated in the "Contacts" section of the Company's website or via e-mail info@realtrader.org.